



V1600GS-R

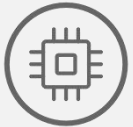
Single pon GPON OLT

Introduction:

V1600GS-R Single-PON Port GPON OLT features a compact, portable design suitable for desktop deployment and supports wall-mount installation, effortlessly adapting to diverse scenarios. Combining robust performance with high cost-effectiveness, it serves as an optimal solution for ultra-low-cost deployment.

The built-in bottom fiber tray structure not only effectively protects the fiber and enhances operational safety but also simplifies fiber installation and maintenance processes. With a PON port splitter ratio of 1:64, it is suitable for low-density scenarios, offering a maximum transmission distance of 20KM and uplink/downlink bandwidths of up to 1.25Gbps/2.5Gbps. It is widely applicable for FTTX, SOHO, and small business office environments.

Highlights:



High Performance Chipset



10GE(SFP+) Uplink



Built-in PON optic module
Flexible and compact

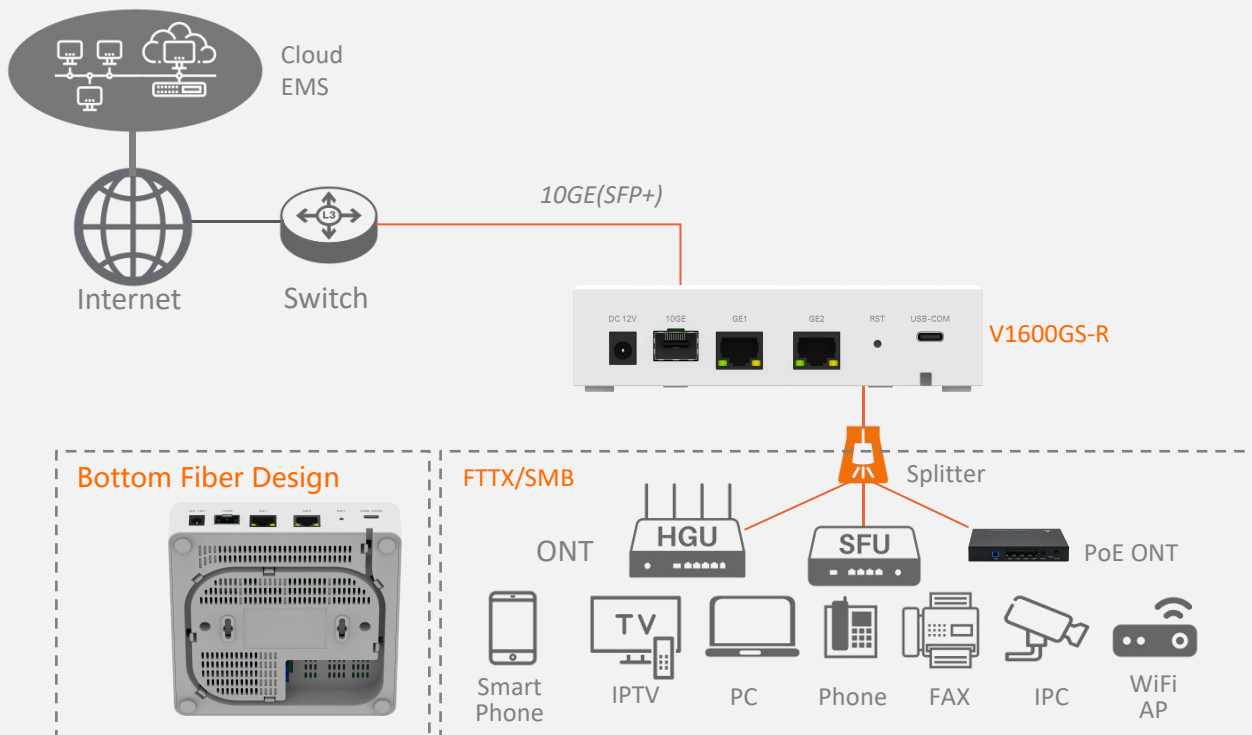


Bottom Fiber Design



Fanless Design

Application Scenarios:



Technical Specifications

| Item | | V1600GS-R |
|--|-----------------------|--|
| Uplink Port | QTY | 3 |
| | RJ45(GE) | 2 |
| | SFP(GE)/SFP+(10GE) | 1 |
| GPON Port Specification | QTY | 1 |
| | Fiber Type | 9/125μm SM |
| | Connector | SC/UPC,TX:7.5±0.5dBm,Sen: -30dBm |
| | GPON port speed | Upstream 1.244Gbps, Downstream 2.488Gbps |
| | Wavelength | TX 1490nm, RX 1310nm |
| | Max splitting ratio | 1:64 |
| | Transmission Distance | 20KM |
| Management Ports | | 1*USB-COM(Type-C) port |
| Backplane Bandwidth (Gbps) | | 29 |
| Port Forwarding Rate(Mpps) | | 21.576 |
| Management Mode | | WEB/Telnet/CLI/SNMP |
| Power Supply | DC Power Adapter | DC 12V/1A |
| Maximum power consumption of the whole machine | | 5W |
| Lightning protection level | Power supply | 4KV |
| | Device Interface | 1KV |

Management Function

- Telnet,CLI,WEB,SNMP;
- Port Status monitoring and configuration management
- Online ONTconfiguration and management
- User management
- Alarm management

Layer2 Switch

- 8K Mac address
- Support 4096 VLANs
- Support port VLAN
- Support VLAN tag/Un-tag, VLAN transparent transmission
- Support VLAN translation, QinQ and P2P
- Support storm control based on port
- Support port isolation
- Support port rate limitation
- Support 802.1D and 802.1W
- Access control list
- IEEE802.x flowcontrol
- Port stability statistic and monitoring

Multicast

- IGMP snooping
- 256 IP Multicast Groups

DHCP

- Support DHCP server,DHCP relay,DHCP snooping
- Support DHCP option82
- Support DHCPv6 server,DHCPv6 relay

Layer 3 Route

- Support dynamic/static ARP
- Support WAN (DHCP/PPPOE/Statics)
- Support static routing, NAT, DMZ
- Support QoS based on DSCP, MAC, IP, L4 port, protocol, etc.
- Support ACL based on source MAC address, source IP address, source L4 port, destination IP address, destination L4 port, protocol type, etc.

IPv6

- Support IPv6 Ping, IPv6 Telnet, IPv6 routing
- Support ACL based on source MAC address, source IPv6 address, source L4 port, destination IPv6 address, destination L4 port, protocol type, etc
- Support IPv6 SLAAC
- Support MLD v1/v2 snooping (Multicast Listener Discovery snooping)

GPON Function

- Tcont DBA
- Gempport traffic
- In compliant with ITU-T984.x standard
- Up to 20KM transmission Distance
- Support data encryption, multi-cast, port VLAN, separation, etc
- Support ONT auto-discovery/link detection/remote upgrade of software
- Support VLAN division and user separation to avoid broadcast storm
- Support power-off alarm function, easy for link problem detection
- Support broadcasting storm resistance function

Weight

- Net weight: 0.23kg

Working Temperature

- -10°C ~+60°C

Storage Temperature

- -40~+70°C

Relative Humidity

- 5~95% (non-condensing)

Dimension (L*W*H)

- 144.45mm*140.00mm*36.5mm

Ordering Information:

| Product Name | Product Description | Power Configuration | Accessories |
|--------------|---------------------------|---------------------|----------------------------------|
| V1600GS-R | 1*GPON, 2*RJ45+1*SFP/SFP+ | 1*DC | 1G SFP module 10G SFP+ module |